

# **ISAAC NEWTON TRUST**

**ANNUAL REPORT**

**TO THE COUNCIL OF**

**TRINITY COLLEGE**

**COVERING THE PERIOD**

**13 MARCH 2003 – 11 MARCH 2004**

**VOLUME XIV**

## CONTENTS

	page
Patron, Trustees and Officers	2
Introduction	3
Aims and objectives of the Trust	3
Financial summary	4
Research grants approved 2003–2004	
Policy	8
Grants Awarded	9
Recurrent Trust scheme grants:	
Newton Trust Bursary scheme for UK undergraduates	14
Research Student Funding: UK Research Students scheme	19
College Teaching Officer schemes	22
Time-Limited Teaching Fellowships scheme	26
Grants made to other bodies:	
Domestic Research Studentships	28
Newton European Research Studentships	29
Special Donations from Trinity College	30
Appendix 1: Audited accounts for year ended 31.1.04	
Appendix 2: Consolidated list of grants (1988 onwards)	
Research grants awarded (by Department) – Yellow Table	
Special Donations from Trinity College:	
Bursary scheme – Cream Table	
Other special donations – Green Tables	
Index to Tables	



## **PATRON**

H.R.H. the Prince of Wales (*Chairman of the Trustees until January 2004*)

## **TRUSTEES**

Professor Sir Tony Wrigley (*Deputy Chairman until January 2004; Chairman from January 2004*)

Baroness O'Neill

Professor A K Sen (*until January 2004*)

Dr C T Morley

Mrs A Lonsdale

Professor N O Weiss

Professor E J Hinch

Professor M S Neuberger

Professor A F Richard (*from October 2003*)

Professor Sir Martin Rees (*from January 2004*)

## **OFFICERS**

Dr J M Rallison (Director)

Dr J R F Fairbrother (Treasurer)

Trinity College, Cambridge CB2 1TQ  
Tel (01223) 339933 Fax (01223) 367944  
[www.newtontrust.cam.ac.uk](http://www.newtontrust.cam.ac.uk)

## INTRODUCTION

This report to the Council covers the period from 13 March 2003 up to, and including, the Trustees' meeting on 11 March 2004. It lists for the period new research grants approved by the Trustees, developments in the main schemes of the Trust, and grants from the Special Donations made by Trinity College. The audited Trust accounts for the year ended 31 January 2004 are given as Appendix 1.

A full account of the Trust's activities in earlier years may be found in Annual Reports volumes I to XIII. A consolidated summary of all grants made by the Trust since 1988 is given in this report as Appendix 2.

Professor A F Richard, Vice-Chancellor, was appointed as a Trustee from October 2003. His Royal Highness the Prince of Wales graciously consented to become Patron of the Trust from January 2004; Professor Sir Tony Wrigley took over from His Royal Highness as Chairman of the Trustees from the same date. Professor A K Sen stood down as Master of Trinity in January 2004. The Trustees express their thanks to Professor Sen for his period of service as a Trustee. Professor Sir Martin Rees was installed as the new Master of Trinity, and became a Trustee *ex officio*, on 15 January 2004.

The Trust maintains a website ([www.newtontrust.cam.ac.uk](http://www.newtontrust.cam.ac.uk)) that gives up-to-date details of the Trust schemes. Those web pages that are concerned with the Bursary scheme (see page 14) are accessible to prospective applicants for undergraduate places from outside Cambridge. The remaining pages, including guidelines to applicants for grants, are accessible only from @cam addresses.

## AIMS AND OBJECTIVES OF THE TRUST

To promote education, learning and research in the University of Cambridge.

## FINANCIAL SUMMARY

### General Fund

Trinity College has agreed to make donations to the Trust for the next five years of £2 million per annum. These donations are credited to the Trust's General Fund. Grants from the General Fund are made to specific research projects and also to recurrent Trust schemes. A summary of the grants made from the General Fund from 1988 up to 11 March 2004 is shown in Table 1 and in graphical form in Figure 1 with a breakdown of these grants by Department in the Yellow Table in Appendix 2.

As shown in Table 1, there was a recovery in the value of the Trust's investments in the year ended 31 January 2004 as a result of improved market conditions.

Expenditure on "Other grants (mainly research)" was higher during 2003-04, reflecting in particular the third instalment of five to the Centre for Research in the Arts, Social Sciences and Humanities, and the final instalment paid to the Language Centre initiating the *Languages at Your Fingertips* collaboration with the BBC that was agreed by the Trust in 2000-01.

The projections of future expenditure in Table 1 are speculative both as to amount and to timing. They include all the grants that the Trustees have approved, though experience suggests that some 20% of these grants will not, in the event, be taken up, either because circumstances change or else because the matching conditions have not been met.

During the past year a number of long-standing commitments (totalling about £0.5 million) have been removed from the projected expenditure because the associated grants will not now be taken up.

### Administration Costs

Expenditure on Administration is much the same as in previous years and represents less than 3% of the Trust's turnover. A breakdown of Administration costs in 2003-04 is shown below.

Stipend of Director (including pension and National Insurance)	£26,788
Stipend of Treasurer (including pension and National Insurance)	£6,871
Other stipends (including pension and National Insurance)	£33,453
Office expenses (including rent)	£7,223
Office equipment	£5,981
Barings management fee for investments	£13,089
Audit fee	£1,762
Miscellaneous expenses	£1,899

## Special Funds

In addition to its donations mentioned above, the College has given the Trust various Special Donations, earmarked for particular purposes. These are credited to Special Funds and are considered individually in the sections below (pages 14-18 and 30-32). The aggregate balance in the Special Funds is given as the final line in Table 1.

The Special Donations A, B and C for University projects have for some time been fully committed, though not fully spent. The Trustees decided in 2003 that it would be timely to wind-up these funds, transferring their remaining assets and liabilities to the General Fund. This transfer took place on 31 January 2004. In the case of Special Donation A, there are no future liabilities and the balance of £78,845 (in accumulated interest) has been transferred to the General Fund. In the case of Special Donation B there are future liabilities totalling £178,700 that relate to grants to Geography, Computer Laboratory, the University Library and the Department of Applied Mathematics and Theoretical Physics, that now appear in the projections of expenditure from the General Fund (see Yellow Table in Appendix 2). In the case of Special Donation C, it has been anticipated for some time that the balance in the fund would be insufficient to cover the Hardship Funds to Colleges that were promised five years ago. The shortfall is £67,702. The net effect of the winding-up of Special Donations A, B and C is that a balance of £94,821 was transferred to the General Fund on 31 January 2004, as shown in Table 1.

Future Annual Reports will no longer include a separate item relating to Special Donations A, B and C.





**GENERAL FUND** (£000's)  
**STATEMENT OF INCOME AND EXPENDITURE AS AT 11 MARCH 2004**  
Including decisions made at the March meeting

	Actual															Projected (at 4% return)				
	Year ended	31.1.90	31.1.91	31.1.92	31.1.93	31.1.94	31.1.95	31.1.96	31.1.97	31.1.98	31.1.99	31.1.00	31.1.01	31.1.02	31.1.03	31.1.04	31.1.05	31.1.06	31.1.07	31.1.08
Balance at start of year		5604	7173	7758	8796	10982	8946	10659	11784	12740	13133	14059	15191	13367	10328	11260	9729	9247	9442	10177
<b>INCOME</b>																				
Trinity College	5000	1000	1000	1000	1000	1000	2000	2000	2000	2000	2000	2000	2000	2000	2000	2000	2000	2000	2000	2000
Other Donors*	10	0	2	15	21	19	28	41	81	113	44	317	280	327	312	240	164	72	72	72
Newton Bursaries Endowment Fund*	0	0	0	0	0	0	0	0	0	0	0	161	223	164	139	170	176	178	178	178
Dividends and interest	606	873	834	876	663	575	660	712	623	640	626	616	549	490	393	450	389	370	378	407
Special Donations A, B and C**															95					
<b>TOTAL INCOME</b>	5616	1873	1836	1891	1684	1594	2688	2753	2704	2753	2670	3094	3052	2981	2939	2861	2729	2620	2628	2657
<b>EXPENDITURE</b>																				
Total Trust expenditure on Bursaries*	0	73	141	175	216	257	310	357	334	396	754	633	859	991	966	1180	1100	1100	1100	1100
CTO Schemes	0	0	0	0	47	76	98	125	130	128	80	149	148	148	146	160	160	160	160	160
Domestic Research Studentships	0	0	0	0	0	0	0	0	0	75	75	75	75	0	75	135	140	140	140	140
UK Research Students Scheme	0	0	0	0	0	9	50	56	46	47	104	117	107	118	125	150	150	100	50	0
Time-Limited Fellowships Scheme	0	0	0	0	0	0	0	0	0	0	0	0	32	56	68	100	100	100	100	100
European Research Studentships Scheme (CET)	0	0	0	0	0	0	0	0	0	0	0	58	122	162	180	200	172	86	20	0
Community-related grants scheme	0	0	0	0	0	0	0	0	0	0	0	18	23	23	23	25	25	25	25	25
Other grants (mainly research)	19	276	1077	1224	1530	1385	1368	1358	1700	2356	1492	1144	1556	2148	1885	2332	1254	604	188	93
Administration	10	12	21	46	46	46	70	57	66	66	70	97	96	94	97	110	110	110	110	110
<b>TOTAL EXPENDITURE</b>	29	361	1239	1445	1839	1773	1896	1953	2276	3068	2575	2291	3018	3740	3565	4392	3211	2425	1893	1728
Gain/Loss on investments	17	57	-12	592	2341	-1857	921	325	528	708	831	329	-1858	-2280	1558	0	0	0	0	0
Balance at end of year	5604	7173	7758	8796	10982	8946	10659	11784	12740	13133	14059	15191	13367	10328	11260	9729	9247	9442	10177	11106

\*For details see Isaac Newton Trust Bursary Scheme (Bursaries Table), which also shows *net* cost of Bursaries to General Fund.

\*\*See Green Tables for net closing balances in Special Donations A, B and C. Remaining liabilities transferred to expenditure totals.

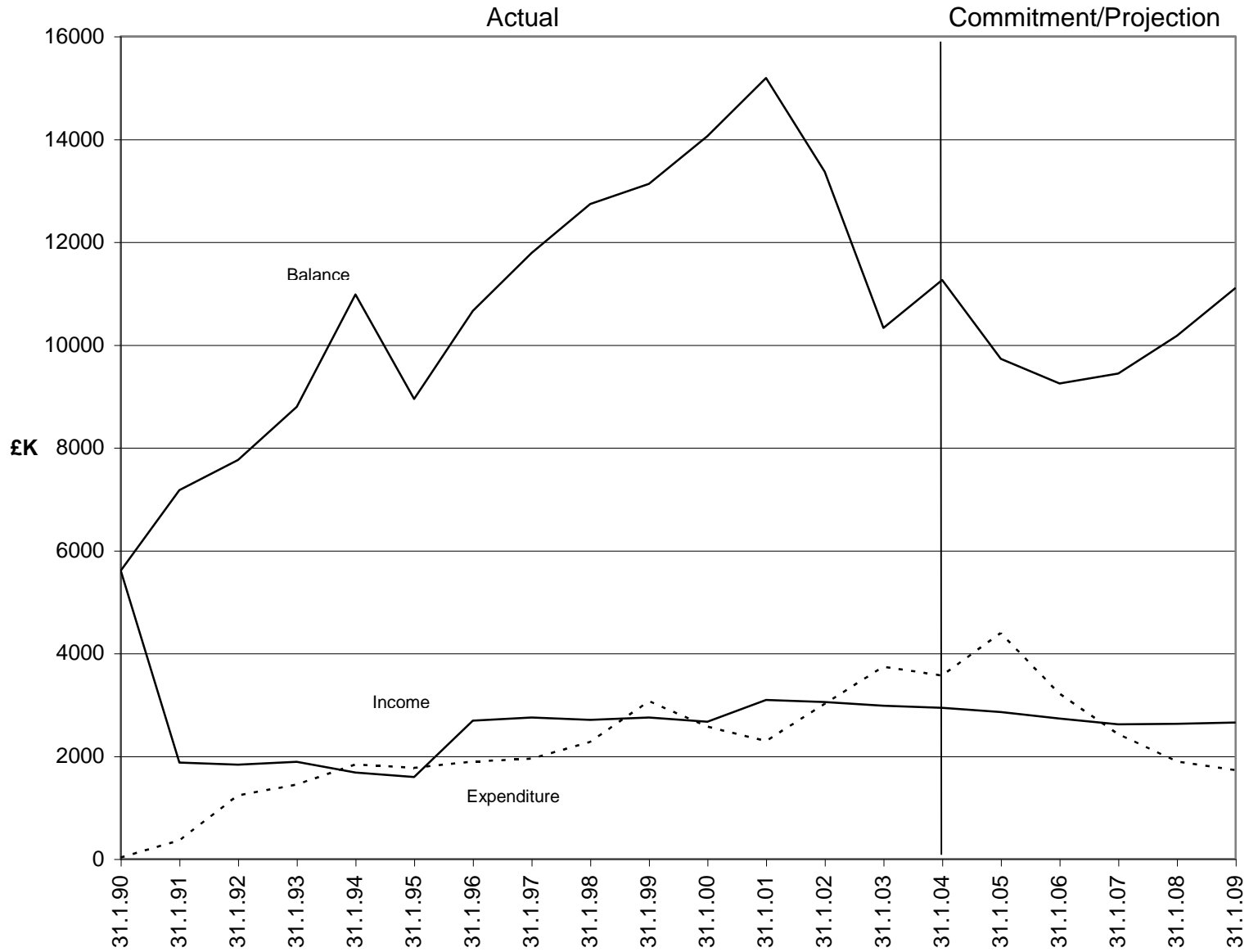
Includes £1m endowment grant to the Isaac Newton Institute for Mathematical Sciences

Aggregate balance at end of year in Special Funds+	1615	4897	6512	6585	7043	6202	4222	4260												
--	------	------	------	------	------	------	------	------	--	--	--	--	--	--	--	--	--	--	--	--

+These totals are included for completeness.

For detail of the Special Funds see the Bursaries Endowment Fund, and the Green Tables, Grants A, B and C.

### GENERAL FUND AS AT 11 MARCH 2004 Including decisions made at the March meeting



## RESEARCH AND TEACHING GRANTS APPROVED 2003-2004

### POLICY

The policy of the Trust in relation to Research and Teaching Grants is summarised in its Guidelines to Applicants. The key features of those Guidelines during 2003/2004 were as follows:

- *The Trustees realise that the funds at their disposal could soon be wholly absorbed in a few big projects. They believe they can best assist the University by focusing their help selectively on projects of various sizes which otherwise might not get started or be significantly delayed, particularly those where a grant from the Trustees can open up opportunities for additional funds from outside Cambridge. The Trust is able to move quite quickly and so help in enabling opportunities to be seized which otherwise might permanently be lost. In all cases the Trustees need to be satisfied that projects are of a high standard. They aim to assist with the funds at their disposal a wide range of projects, covering many departments and faculties across the humanities and sciences.*
- *Since one of the purposes of the Trust is to attract resources from outside, grants from the Trust are normally conditional upon raising from sources outside Cambridge at least twice the amount of the grant. The Trustees have agreed to vary or even set aside this condition for projects that they consider of particular importance where the prospects of obtaining such external funding are remote.*
- *When applications are made to Research Councils in a routine way, the Trust will expect applicants to apply to the Councils for the full amount of the funds that they require. If a particular application is not wholly successful, the Trustees may be willing to consider an application for a top-up grant from the Newton Trust for a new initiative or project they regard as particularly important; and may allow the partial grant from the Research Council to be regarded as matching funds; but they do not guarantee to do so.*
- *The Trustees are persuaded that their most effective contribution is to help attract talented persons to Cambridge and to maintain the University's reputation as a centre of excellence in research. Thus the aim of the Additional Appointments Scheme (by which grants are made of up to £15,000 per annum for no more than 5 years, subject to matching amounts being raised from outside sources) is to provide limited-tenure research posts, perhaps involving a small amount of teaching, for younger academics.*
- *The Trust does not normally contribute towards the costs of pre-doctoral students because PhD studentships are available from Research Councils, from the Cambridge Commonwealth, European, Overseas, and Gates Trusts, and from the Domestic Research Studentships competition organised by the Board of Graduate Studies.*
- *The Trustees do not in their own right seek funds from outside (the only exception being the scheme of Newton Bursaries for undergraduates). It is therefore the responsibility of recipients of grants to raise the additional monies which are a condition of their grants from the Trust.*

- *The Trustees do not give priority to grants for equipment and in particular do not normally support requests for replacement of standard items. However, they have made modest provision for equipment grants and will give priority to requests for new equipment for teaching or new equipment which has multiple use. Such grants will normally be for no more than one-third of the total cost. The Trustees do not normally entertain requests for “bricks and mortar” projects.*

In order to assist prospective applicants, more detailed Guidelines concerning the preparation of applications were approved by the Trustees during 2003-04. An up-to-date version of these Guidelines can be found on the Trust’s website at [www.newtontrust.cam.ac.uk](http://www.newtontrust.cam.ac.uk).

## **APPLICATIONS**

In 2003-04 the Trust received a total of 59 new applications for support; the year to March 2004 has shown a 40% increase in the number of new applications over the average of the previous six years.

The total cost of supporting these applications in full would have been £2.6m. In the event, 45 applications were supported at a total cost of £1.5m (many grants being made at a lower level than had been requested), and 14 applications were rejected.

## **GRANTS AWARDED**

The following grants (totalling £1.5 million) were approved by the Trustees during the report period. They are listed alphabetically by Department. The amounts of individual grants may be found in Appendix 2 (Yellow Table). If the matching requirement associated with each grant is achieved, the total matching sum associated with these grants will be £1.7 million. In some instances this matching sum would no doubt have come to Cambridge anyway; in others it has been elicited by the Newton Trust grant.

*Anatomy:* A grant for one year towards the salary of Dr Tahl Holtzman to work as a postdoctoral researcher with Dr S A Edgley on a project entitled, ‘Neuronal Regulators of Information Processing in the Cerebellar Microcircuit’.

*Anatomy:* A grant over three years towards the salary of an Animal Technician to work with Dr Katharine Lewis on a project entitled, ‘Interneuron Specification and Development in the Vertebrate Spinal Cord’ together with a grant towards the cost of an amplifier, oscilloscope and incubators.

*Architecture:* A grant towards start-up funding for the academic year 2003-04 for a project entitled, ‘Alang Shipbreaking Yards, near Ahmedabad, India’, together with a grant in the form of underwriting for two subsequent years. Under the direction of Dr Nicholas Ray, the project will establish a programme for postgraduate students of Architecture to work alongside students of Engineering in designing a prototype 1000-dwelling settlement in India.

*Biochemistry:* A grant over two months towards the salary of Dr Nicola Jones to work as a postdoctoral researcher with Dr Mark Carrington on a project entitled, 'The structure of the major cell surface protein of the African trypanosome'.

*Biochemistry:* A grant towards the purchase of a Leica DMLB, Zeiss Axioscop or similar fluorescence compound microscope with digital camera for Part I NST undergraduate teaching in the Departments of Biochemistry, Genetics, Plant Sciences and Zoology. (Applicant: Dr Paul Dupree.)

*Biotechnology:* A grant towards the purchase of a Leica TCS2 SP2 AOBS confocal microscope for use in a range of projects in the Institute of Biotechnology under the direction of Professor Chris Lowe, Dr Alan Tunnacliffe and Dr James Murray.

*Biotechnology:* A grant over 18 months towards the salary costs of Dr Sarah de Jager to work with Dr James Murray as a post-doctoral researcher on a project entitled, 'Transcriptional and hormonal regulation of plant cell division'.

*Biological Anthropology (Leverhulme Centre for Human Evolutionary Studies):* A grant over three years towards the salary and associated costs of a postdoctoral researcher to work on a project entitled, 'Human evolutionary genetics' under the direction of Professor Robert Foley and Dr Marta Lahr. This grant is awarded as seed-corn funding for the new Leverhulme Centre for Human Evolutionary Studies.

*Social Anthropology:* A grant over eight months towards the costs of a project entitled, 'Traditional medicine and indigenous knowledge, with practical applications in Amazonia', directed by Dr Stephen Hugh-Jones and Dr Françoise Barbira-Freedman.

*Chemistry, and Applied Mathematics and Theoretical Physics (Centre for Atmospheric Science):* A grant over three years towards the salary costs of two post-doctoral researchers to work with Professor John Pyle and Professor Peter Haynes on a project entitled, 'The tropical tropopause region: chemistry and transport.'

*Classics (Museum of Classical Archaeology):* A grant over three years towards the part-time salary of Ms Jacqui Strawbridge as Museum Education Officer. (Applicant: Professor Martin Millett.)

*Divinity:* A grant over three years as a contribution towards the salaries of two post-doctoral researchers to work with Dr Edward Kessler on a project entitled, 'The exegetical encounter between Jews and Christians in late Antiquity'.

*Earth Sciences:* A grant over three years towards the salary costs of Dr A Tripathi and one other post-doctoral researcher to work with Professor I McCave and Professor H Elderfield on a project entitled, 'Rapid Climate Change: Impacts on the Ocean', together with a further sum towards the cost of equipment for use on the project.

*Applied Economics:* A grant over two years towards the salary and associated costs of Dr Emanuele Giovannetti and Dr Cristiano Ristuccia to work on a project entitled, 'Price comparison sites and competition: the Internet Connectivity market' under the direction of Professor David Newbery.

*Engineering:* A grant over two years towards the salary of Dr K Iida to work as a Senior Research Associate with Dr David Cardwell on a project entitled, 'The development of practical bulk YBCO superconductors for Engineering applications'.

*Engineering:* A grant to extend by three years the existing appointment of Dr Darren Radford as a Senior Research Associate to work with Professor Norman Fleck on a project entitled, 'Dynamic Properties of Sandwich Structures and Natural Materials'.

*Engineering:* A grant over two years as a contribution to the salary costs of Dr Paul Colegrove to work with Dr Hugh Shercliff as a Research Associate on a project entitled, 'Modelling and development of Friction Stir Welding'.

*Engineering:* A grant over two years towards the salary costs of Dr Pedro Estrela to work with Professor Piero Migliorato as a post-doctoral researcher on a project entitled, 'Detection of biomolecular interactions by metal-insulator-semiconductor devices for multi-channel disposable biosensors'.

*Engineering:* A grant over one year towards the salary costs of Dr Cedric Kechavarzi to work with Dr Kenichi Soga as a post-doctoral Research Associate on a project entitled, 'Modelling gas-hydrate dissociation and formation in submarine sediments'.

*Genetics:* A grant over two years towards the salary of Dr Gos Micklem to work on a project entitled, 'Informatics for genome scale biology' under the direction of Professor Michael Ashburner.

*Genetics:* A grant over three years towards the salary costs of Dr Bénédicte Sanson to work with Professor David Glover on a project entitled, 'Molecular basis of Cell Behaviour and Cell Signalling in the Embryonic Epidermis of *drosophila*' during the absence of Dr Cahir O'Kane.

*Geography:* A grant over two years towards the salary costs of Dr Frank Nober to work as a postdoctoral researcher on a project entitled, 'Treatment of (mainly) convective clouds in large scale circulation and climate models' under the direction of Professor Hans Graf.

*Haematology:* A grant over two years towards the salary costs of Dr Aiwu Zhao to work as a postdoctoral researcher with Professor Robin Carrell and Professor David Lomas on a project entitled, 'Design of blocking agents to prevent conformational diseases'.

*History of Art:* A grant over two years towards the salary of Dr Tom de Wesselow to work as a postdoctoral researcher on a project entitled, 'The Cartographic Landscape: cartography and landscape imagery in the Late Middle Ages' under the direction of Professor Deborah Howard.

*History of Art:* A grant over three years towards the salary costs of Dr Christiane Esche-Ramshorn to work on a project entitled, 'Sharing St Peter's in Renaissance Rome: East and West at the Vatican and the Consequences for Art', under the direction of Professor Deborah Howard.

*Judge Institute of Management Studies:* A grant over two years towards the salary of Dr Rui Huaichuan to work as a post-doctoral researcher on a project entitled, 'The impact upon the Chinese coal industry of the global value chain 'cascade effect'' under the direction of Professor Peter Nolan, together with a further sum towards equipment and fieldwork expenses.

*Judge Institute of Management Studies:* A grant over three years in the form of underwriting as a contribution towards the salary of a postdoctoral Research Associate to work with Dr Paul Tracey on a project entitled, 'Inter-organisational collaboration and the management of cross-sector partnerships in community enterprise', together with a further sum towards the cost of fieldwork and dissemination.

*Applied Mathematics and Theoretical Physics (Millennium Mathematics Project):* A grant in the form of underwriting for one year towards the salary costs of Ms Jenni Back to work as a part-time Coordinator, and Ms Liz Pumfrey to work as a full-time Primary Teaching Assistant under the direction of the Project's Director, Professor John Barrow.

*Applied Mathematics and Theoretical Physics (Centre for Quantum Computation):* A grant over three years towards the salary costs of Dr Jonathan Oppenheim to work with Dr Adrian Kent on a project entitled, 'Protocols for Secure Computation (PROSECCO).'

*Applied Mathematics and Theoretical Physics (Institute of Theoretical Geophysics):* A grant over two years towards the salary of a post-doctoral researcher to work with Professor Herbert Huppert on a project entitled, 'Flow of granular material'.

*Medicine:* A grant over three years towards the salary costs of Dr Andrew Cowburn to work as a post-doctoral researcher with Professor Edwin Chilvers on a project entitled, 'Cytokine-mediated granulocyte survival', together with a further sum towards consumables.

*Modern and Medieval Languages (Department of Italian):* A grant over two years towards the salary costs of Dr Olivia Santovetti to work on a project entitled, 'Making the Italian Reader: history of reading – Italy 1861-1914' under the direction of Professor Z Baranski, together with a further sum towards the costs of travel associated with the project.

*Oncology:* A grant over three years towards the salary of a Senior Bioinformatician to work with Professor Simon Tavaré on a project entitled, 'Computational support for cancer genomics'. This grant is intended as seed-corn funding towards the establishment of the new Cambridge Computational Biology Institute.

*Oriental Studies:* A grant towards equipment and invigilation costs to enable language teaching to continue on the Sidgwick Site language laboratories for one year from October 2003. (Applicant: Professor Nicholas Postgate.)

*Oriental Studies:* A grant over one year towards the salary costs of Mr A Thomas to work with Professor Nicholas Postgate as a Research Associate on the publication and electronic archiving of the Kilise Tepe excavation, Turkey and on the publication of Vol.5 of the Abu Salabikh excavations, Iraq.

*Pathology:* A grant over two years towards the salary of Dr Helle Jacobsen to work as a post-doctoral researcher with Professor Anne Cooke on a project entitled, 'Analysing mechanisms controlling Sjogrens Syndrome'.

*Psychiatry:* A grant over one year towards the salary costs of a post-doctoral researcher to work with Dr Felicia Huppert on a project entitled, 'Factors associated with positive well-being – a life-course perspective', together with a further sum towards the cost of software and IT support.

*Experimental Psychology:* A grant over one year towards the salary costs of Dr Ulrich Müller to work with Professor Trevor Robbins as a Research Associate on a project entitled, 'Bi-directional dopaminergic modulation of the prefrontal cortex: a neurogenetic and pharmacological functional magnetic resonance imaging (fMRI) study' together with a further sum for equipment, software and consumables. This grant is intended in part as seed-corn funding for the new MRC Centre in Behavioural and Clinical Neuroscience.

*Experimental Psychology:* A grant over two years towards the salary costs of Dr Meredith Shafto to work with Professor Lorraine Tyler as a post-doctoral Fellow on a project entitled, 'Plasticity and reorganisation in the ageing brain.'

*Wellcome Trust/CR-UK Institute of Cancer and Developmental Biology:* A grant over one year towards the salary and associated costs of Dr Katia Ancelin to work with Professor Azim Surani on a project entitled, 'Specification of germ cell lineage in mice'.

*Zoology:* A grant of towards the purchase of a Photometrics Cascade 512F high performance cooled CCD camera with computer control for use on a project entitled, 'Optical Imaging of Neural Activity' under the direction of Dr Berthold Hedwig.

*Zoology:* Grants over one year towards the salary costs and living expenses of Dr Reinmar Hager to enable him to work with Dr Rufus Johnstone as a post-doctoral Research Associate on a project entitled, 'Family conflict resolution in mice'.

*Zoology:* A grant over six months towards the costs of consumables in support of the work of Dame Anne McLaren on a project entitled, 'Differentiation of mouse embryonic germ (EG) cells *in vitro*.'

*Zoology:* A grant in the form of underwriting in support of the salary of Dr Dávid Szüts as a Research Associate for up to eight months to work with Dr Torsten Krude on a project entitled, 'Activation of DNA damage signalling mechanisms by the DNA replication machinery.' (Dr Torsten Krude)



## **RECURRENT TRUST SCHEMES**

### **NEWTON TRUST BURSARIES FOR UK UNDERGRADUATES**

#### **Aims and objectives**

The scheme of Newton Trust Bursaries for UK Undergraduates was set up in response to the freezing, and progressive phasing out of student grants, the introduction of student loans and later of tuition fees. The main purpose of the scheme is to help attract the best candidates to Cambridge and to widen the field from which they are drawn, through support for students from disadvantaged backgrounds and from families with modest financial resources.

#### **Policy**

The Trust has received three Special Donations from Trinity College towards the endowment of the Bursary scheme. In addition the scheme has been supported on a recurrent basis by several sponsors and by a donation of £1 million phased over seven years from Atlantic Philanthropies.

In the light of these donations, the Trustees agreed in 1999 to expand the bursary scheme substantially. A guarantee was offered that any student in receipt of full LEA fee remission (i.e. with a parental income of less than about £20,000) would receive a full bursary of £1,000, with a sliding scale for students who qualify on the basis of their parental income for a lower level of fee remission.

The cost of these awards is borne in part by Colleges, broadly in line with their endowment income per capita. Levels of contribution are shown in Table 3. St John's College is progressively taking over the cost of awards for its own students; in 2003-04 only fourth and higher year students at St John's were eligible to apply to the Trust.

The finances of the expanded bursary scheme are shown in Table 2, which includes the Newton Bursaries Endowment Fund, established to receive the Trinity College Special Donations earmarked for endowment of Bursaries.

A long-term evaluation of the bursary scheme, funded over ten years by Atlantic Philanthropies, is being carried out by the University's School of Education.

The scheme of bursaries is advertised on the Trust's web-site, in the University prospectus and in advertising sent to schools. This material includes a guarantee that any student who qualifies for full fee remission will also be awarded a full bursary.

The Trustees have agreed to maintain the present bursary scheme substantially unchanged up to 2006. Projections of costs after that date are speculative (see below).

**ISAAC NEWTON TRUST BURSARY SCHEME** (£000's)**(a) Receipts and Expenditure account (actual and estimated)**

Year ended 31.1	Actual														Projected (at 4% return)				
	1991	1992	1993	1994	1995	1996	1997	1998	1999	2000	2001	2002	2003	2004	2005	2006	2007	2008	2009
Newton Bursaries Endowment Fund	0	0	0	0	0	0	0	0	0	0	161	223	164	139	170	176	178	178	178
Atlantic Philanthropies (1)	0	0	0	0	0	0	0	0	0	0	200	200	200	200	133	67	0	0	0
Evaluation (paid by Atlantic Philanthropies)												43	21	40	35	25	0	0	0
Clifford Chance	0	2	8	10	10	14	1	37	18	18	25	0	69	35	35	35	35	35	35
Hinduja Foundation	0	0	7	8	9	11	15	14	30	0	15	15	15	15	15	15	15	15	15
Mitsubishi Corporation	0	0	0	3	0	2	0	3	0	0	0	0	0	0	0	0	0	0	0
Armourers and Braziers Gauntlet Trust	0	0	0	0	0	1	1	1	1	1	1	2	2	2	2	2	2	2	2
Malaysian Commonwealth Bursaries	0	0	0	0	0	0	0	0	40	0	20	20	20	20	20	20	20	20	20
Eagle Star (BAT Industries)	0	0	0	0	0	0	25	25	25	25	0	0	0	0	0	0	0	0	0
Voluntary contribution from Colleges (for 00-01)(2)	0	0	0	0	0	0	0	0	0	0	55	0	0	0	0	0	0	0	0
General Fund (net cost)	73	139	160	195	238	282	315	254	282	710	156	356	500	515	770	760	850	850	850
<b>TOTAL TRUST EXPENDITURE ON BURSARIES (actual)</b>	<b>73</b>	<b>141</b>	<b>175</b>	<b>216</b>	<b>257</b>	<b>310</b>	<b>357</b>	<b>334</b>	<b>396</b>	<b>754</b>	<b>633</b>	<b>859</b>	<b>991</b>	<b>966</b>	<b>1180</b>	<b>1100</b>	<b>1100</b>	<b>1100</b>	<b>1100</b>
College contributions (3)	0	0	0	0	0	0	0	0	0	0	180	220	250	239	289	270	270	270	270
Trinity, Caius and St John's (own schemes - estimated)	20	35	45	50	60	90	90	90	100	140	140	200	240	260	275	275	275	275	275
<b>TOTAL EXPENDITURE ON BURSARIES (Estimated)</b>	<b>93</b>	<b>176</b>	<b>220</b>	<b>266</b>	<b>317</b>	<b>400</b>	<b>447</b>	<b>424</b>	<b>496</b>	<b>894</b>	<b>953</b>	<b>1279</b>	<b>1481</b>	<b>1465</b>	<b>1744</b>	<b>1645</b>	<b>1645</b>	<b>1645</b>	<b>1645</b>

**(b) Newton Bursaries Endowment Fund**

Balance at start of year										2078	3211	4461	4097	3486	4260	4393	4460	4460	4460
Donations	Trinity College								2000	1000	1205	200	200	200	133	67	0	0	0
	Atlantic Philanthropies (1)									67	-67	0	0	0	0	0	0	0	0
	Cambridge Society										5								
Dividends and interest									45	115	153	147	142	139	170	176	178	178	178
Gain/Loss on investments									33	-49	115	-488	-789	567	0	0	0	0	0
Transfer to Receipts and Expenditure account (4%)									0	-161	-223	-164	-139		-170	-176	-178	-178	-178
Balance at end of year									2078	3211	4461	4097	3486	4260	4393	4460	4460	4460	4460

(1) 67 from Atlantic Philanthropies credited to Newton Bursaries Endowment Fund 1999/2000; but was intended to be spent, so transferred to Receipts and Expenditure account 2000/2001.

(2) These voluntary contributions made in 2000-2001 relate to bursaries paid in 1999-2000.

(3) These totals are the formula amounts that Colleges have agreed to contribute to their own students as part of the Scheme. They do not include other Hardship Grants provided by Colleges to their students.

## **Bursaries after 2006**

After many delays, the Government White Paper on Student Finance was published during 2003. The White Paper proposes that universities should be permitted to charge so-called “top-up fees” after 2006 subject to the approval of an Access Regulator (OFFA), whose decision will be based upon the Access initiatives, including bursaries, that universities have put in place. If the White Paper proposals are enacted, and if the University decides to charge the maximum top-up fee permitted, both of which now seem likely, then a substantially expanded bursary scheme will be needed both to support the poorest students and to satisfy OFFA. The University, as distinct from the Colleges, will necessarily be part of those arrangements for the first time.

During 2003, the Trust took the initiative in raising with Colleges the question of whether they would continue to provide part of the cost of bursaries after 2006. The Colleges agreed in principle that they would wish to do so, and that the Newton Trust should be asked to continue to administer the bursary scheme. The University also has asked the Trust to continue in this role, and the Trustees have agreed to do so for at least three years after 2006.

Again on the Trust’s initiative, plans were formulated by the University Council for a more generous bursary scheme after 2006 if the White Paper proposals are enacted. These plans were announced in December 2003 and have since been widely referenced by Ministers and in the media.

The University has also indicated that fundraising for student support will be a major component of its 800th Anniversary campaign and that funds raised for this purpose will be directed to the Newton Trust. Colleges, too, will be involved in fundraising in support of their share of bursary costs for their own students.

Matters cannot formally be taken further unless and until the Higher Education Bill is passed, and the Regent House has given approval to the principle of top-up fees.

## **Grants for Community-Related Projects**

The Trust has continued to operate a scheme offering contributions to community-related undergraduate projects with preference being given to bursary-holders and those undertaking projects within the UK. Some 103 awards were made under this scheme in 2003-04 at a total cost of £23,685. Most of the grants to individuals were for sums less than £500, but within the total the Trust approved a grant of £2,000 to Student Community Action towards equipment and office costs.

## **Results of the 2003-04 Bursary allocation**

All eligible applicants were awarded a bursary on a sliding scale up to £1,000 thereby meeting the Trust’s guarantee. The number of awards made is given below (2002-03, 2001-02 and 2000-01 figures in parenthesis):

- a total of 1734 (1629) (1551) (1290) bursaries were awarded at a total cost of about **£1,247,000** (£1,202,000) (£1,107,000) (£867,000);
- the cost to the Trust net of College contributions is about **£1,007,000**;
- of the total **1761** applications for bursaries (new and renewals), **27** were deemed ineligible to receive support;
- **380** of these awards remain to be settled upon receipt by the Trust of students' LEA assessments.

First year students (only) taking the Graduate Course in Medicine were invited to apply for a bursary. Seventeen of the 20 students applied; 14 bursaries were awarded.

The total number of bursaries awarded is more than twice as great as it was five years ago. About 20% of eligible UK students now receive bursaries.

Numbers and costs of awards by College are shown in Table 3.

Because a larger number than usual of awards remained to be settled at the end of the Trust's financial year, the overall cost of the scheme was about £75,000 lower than expected in the financial year 2003-04 and the estimate for the financial year 2004-05 has been correspondingly increased.

### **Collaborators**

*Clifford Chance*: Clifford Chance continue to make a contribution to the bursary scheme at a level of £35,000 per annum.

*Atlantic Philanthropies*, who hitherto preferred to remain anonymous, now publicly acknowledge the support that they offer to the bursaries scheme and advertise their grants on their own website.

*Armourers and Brasiers*: Five Armourers and Brasiers awards were made.

*Cambridge Society*: The fourth Cambridge Society bursary has been awarded.

For the remaining schemes (*Dharam Hinduja Newton Bursaries*, *Malaysian Commonwealth Studies*) the bursary recipients have been identified and the students notified. The usual contributions from the sponsors, £15,000 and £20,000 respectively, have been paid.



## RESEARCH STUDENT FUNDING

The Trust supports Research Students at Cambridge in three ways: through its own scheme of Awards for UK Research Students described below; through the Board of Graduate Studies Scheme of Domestic Research Studentships (available to both UK and EU students) described on page 28; and through the scheme of Newton European Research Studentships (for EU students) operated by the Cambridge European Trust and described on page 29.

Research Council policy in relation to funding of Masters and Doctoral students continues to change rapidly; in consequence, as described below, the Trust keeps its own policies under regular review.

## NEWTON AWARDS FOR UK RESEARCH STUDENTS

### Aims and objectives

The scheme, now discontinued in its original form, set out to encourage a greater number of United Kingdom students with outstanding academic records and research potential to study for the degree of PhD at Cambridge. The awards supplement the maintenance allowances available under the usual British Research Council studentships.

### Policy

There are two types of award:

- *Shared-Cost Newton Awards for UK Research Students* of a value of £1,500 per annum, each of up to three years' tenure, subject to satisfactory academic progress by the student. The awards are funded on a fifty:fifty basis by the Newton Trust and by industrial and commercial sponsors outside Cambridge.
- *General Newton Awards for UK Research Students*, each of a value of £750, also of up to three years' tenure, subject to satisfactory academic progress, the whole amount to be provided by the Newton Trust. These awards are offered to students in Departments and Faculties where the prospects of sponsorship are remote, but where the academic arguments for encouraging research are strong.

No new awards were made under this scheme in 2003-04, though a small number of awards are ongoing from previous years. The cost of these awards in 2003-04 was **£36,750**. This is expected to be the final payment under this scheme.

On the Science side, the availability of Research Council Doctoral Training Accounts since 2001 has enabled Departments to make top-up maintenance awards from public sources, the Trust therefore decided to focus its scheme on Arts, Humanities and Social Sciences until the AHRB and ESRC operate different arrangements.

## **NEWTON AWARDS FOR UK RESEARCH STUDENTS IN THE ARTS, HUMANITIES AND SOCIAL SCIENCES**

A new and experimental scheme of awards restricted to the Arts, Humanities and Social Sciences operated for the first time in 2002. Awards of £1,500 per year were offered for new PhD students from the UK holding either a 3-year Research Council maintenance grant or a similar 1-year Research Council grant with the intention of proceeding thereafter to the PhD degree in Cambridge. The scheme operated for the second time in 2003, and was reviewed by the Trust in 2004.

### **Aims and objectives**

A review of post-graduate support by the British Academy in 2002 identified as a high priority increasing maintenance allowances for PhD students above the new Research Council levels. The Trust's aim is that this new scheme will be a partial contribution to that objective and will attract good students who might not otherwise have come to Cambridge. A further objective is that a high calibre of students will be attracted into the Domestic Research Studentships competition operated by the Board of Graduate Studies, which is also partially funded by the Trust.

### **Policy**

The Trust allocated **49** new awards to Departments and Faculties as follows:

#### ***School of Arts and Humanities***

Architecture	1
Classics	2
Divinity	2
English	6
Modern & Medieval Languages	7
Oriental Studies	2
Philosophy	3

#### ***School of Humanities and Social Sciences***

Archaeology	2
Anthropology	2
Criminology	3
Economics	2
Education	3
History	6
Law	2
History & Philosophy of Science	4
Social & Political Sciences	2

Some Departments are themselves adding to the awards from their own Trust funds.

Faculties and Departments are required to advertise these awards to potential applicants for PhD places and to draw to the attention of such applicants to the Board of Graduate Studies Domestic Research Studentships (DRS) competition.

### **Awards made in 2003-04**

The Trust offered **49** new awards in 2003-04. Three Faculties did not submit nominations; four Faculties did not use their full allocation of awards and two candidates were ruled ineligible. **32** awards were made

The total cost of the new and continuing awards in 2003-04 was **£93,000**.

### **Policy Review**

A review by the Trust in 2004 decided that the scheme should be discontinued. There were two reasons for this decision. First, the level of maintenance grant provided by the AHRB had increased from £7,500 when the scheme was introduced to at least £10,500 in 2004-05 and thus the primary objective identified by the British Academy had been met. In addition, consultation with students who had been allocated awards in 2002 and 2003 indicated that their decision to study in Cambridge had not been influenced by the existence of these awards; they would have chosen to come here in any case. Thus the Trust's second objective - attracting talented Research Students to Cambridge who might not otherwise have come - was not being met.

It was therefore agreed for the present to focus the Trust's support for Research Students on the DRS competition (see page 28).



## COLLEGE TEACHING OFFICER (CTO) SCHEMES

### Aims and objectives

The aims of these schemes are to increase CTO involvement in Faculty teaching and the amount of University teaching available, allow Faculties to choose such extra teachers from CTO ranks as they wish, make it possible for the Tuition Funds of poorer Colleges to afford the consequent reduction in the amount of CTO teaching, and to achieve these aims through a scheme that is simple to operate. Tenure in these posts is limited to a maximum of ten years.

The original scheme established in 1992 operates across faculties, though in practice most posts are in the Humanities. The Norton Rose scheme established in 1999 is part-funded by City solicitors Norton Rose and operates only in the Faculty of Law.

### Summary of awards 2003-2004

#### Main scheme

**Thirty-three** awards have been made under the first and second phases of this scheme as follows:

- Classics (2)
- Economics (1)
- English (7)
- History (6)
- History and Archaeology and Anthropology (1)
- Land Economy (1)
- Law (3)
- Mathematics (3)
- Modern and Medieval Languages (5)
- Oriental Studies (1)
- Physics and Chemistry (1)
- Social and Political Sciences and Economics (1)
- Social and Political Sciences and History and Philosophy of Science (1)

**Thirty** posts are currently filled.

Mr Johnston and Mrs Tee resigned their posts with effect from 31 December 2003. Both vacancies have been filled with effect from 1 October 2004. Two post-holders are currently on leave: Dr Smith and Dr Thompson. Dr Thompson's post has temporarily been filled by Dr Rimell.

A list of present holders of awards is given in Table 4 below.

#### Norton Rose scheme

The list of post-holders given in Table 4 also includes those appointed under the broadly parallel scheme operated by the Faculty of Law with (half) sponsorship from Norton Rose. The latter scheme has two kinds of post, '25% posts' (the same as the CTO scheme) and also '50% posts' where duties and payments are approximately double those under the CTO scheme. Five posts are presently filled under the Norton Rose scheme.

## Costs

The cost of the CTO scheme for the academic year 2003-2004 was **£125,628**. The cost to the Trust of the Norton Rose scheme in 2003-2004 was **£20,152**.

## Recent changes

Several new appointments, reappointments and resignations arose during the year:

### **Faculty of English**

Dr Kate Bennett (Pembroke) had been appointed for four years from 1 October 2003. This is the maximum period available to Dr Bennett in the first instance since she held a one-year appointment as a stand-in for Dr Connell in 2002-03.

### **Faculty of History**

Dr Richard Toye (Homerton) has been appointed for five years from 1 January 2004.

Dr Paul Warde (Pembroke) has been appointed for five years from 1 January 2004.

### **Faculty of Law**

Ms Jo Miles (Trinity) has been appointed for three years from 1 October 2004. Ms Miles has held tenure under the Norton Rose CTO scheme for four years. In order to maintain the principle that CTO post-holders have a maximum total tenure of 10 years, a condition of her appointment was that any reappointment after 2007 should be for a maximum period of 3 years.

Dr Jennifer Davis (Wolfson) has been appointed for three years from 1 October 2004. Dr Davis has held a Newton CTO Lectureship for one year and a Norton Rose CTO lectureship for three years. Her appointment is made on the condition that any further reappointment after 2007 should be for a maximum period of 3 years.

Dr Michael Dougan's (Downing) tenure ended on 30 September 2003. As a consequence the supernumerary arrangement for the Faculty of Law reported under Minute 3.13(b)(i) had come to an end.

Mr Angus Johnston (Trinity Hall) resigned his post with effect from 31 December 2003 in order to take up a University Lectureship.

Dr Catherine Seville (Newnham) has been reappointed for a further and final two years from 1 October 2003.

Mrs Louise Tee (Lucy Cavendish) is leaving the Cambridge area and resigned her post with effect from 31 December 2003.

### **Faculty of Mathematics**

Dr Christopher Brookes (Corpus Christi) had been reappointed for a further three years from 1 October 2003

**Faculty of Modern and Medieval Languages**

Mr Jean Khalfa (Trinity) has been reappointed for a further three years from 1 October 2003.

**Joint Appointment: Faculty of Economics and Faculty of Social and Political Sciences**

Dr Paul Lewis (Selwyn) changed affiliation from Newnham to Selwyn College with effect from Michaelmas Term 2003.

**Joint Appointment: Faculty of History and Philosophy of Science and Faculty of Social and Political Sciences**

Deborah Thom (Robinson) was reappointed for a further and final two years from 1 October 2003.

**TABLE 4 : Present holders of CTO appointments**

Name	Title	Initials	Faculty	No	College	Start tenure	End tenure
Aldred	Dr	Jonathan	Land Economy	1 of 1	Emmanuel	1.10.2002	30.9.2007
Bennett	Dr	Kate	English	7 of 7	Pembroke	1.10.2002 1.10.2003	30.9.2003 30.9.2007
Best	Dr	Victoria	MML	2 of 5	St John's	1.10.2001	30.9.2006
Bodenhorn	Dr	Barbara	Social Anthropology	1 of 1	Pembroke/Girton	1.10.2001	30.9.2006
Brookes	Dr	C J B	Mathematics	1 of 3	Corpus Christi	1.10.1998 1.10.2003	30.9.2003 30.9.2006
Connell	Dr	Philip	English	5 of 7	Selwyn	1.10.2001 1.10.2003	30.9.2002 30.9.2007
Cooper	Dr	Sarah	MML	3 of 5	Trinity Hall	1.10.2001	30.9.2006
Demoulini	Dr	Sophia	Mathematics	3 of 3	Downing	1.1.2001	30.12.2005
Dörrzapf	Dr	Matthias	Mathematics	2 of 3	St John's	24.04.2001	31.3.2006
Fleet	Dr	Kate	Oriental Studies	Super	Newnham	1.1.2001	30.9.2006
Gatti	Dr	Rupert	Economics	1 of 1	Trinity	1.10.2001	30.9.2006
Gonda	Dr	Caroline	English	3 of 7	St Catharine's	1.10.1998	30.9.2004
Guthrie	Dr	J	MML	1 of 5	New Hall	1.10.2000	30.9.2005
Henry	Dr	Anne	English	1 of 7	Trinity	1.10.2002	30.9.2007
Horrox	Dr	Rosemary	History	3 of 6	Fitzwilliam	1.10.2002	30.9.2007
Izzet	Dr	Vedia	Classics	2 of 2	Christ's	1.10.2001	30.9.2006
James	Dr	I	MML	4 of 5	Downing	1.10.2000	30.9.2005
Johnston	Mr	Angus	Law	1 of 3	Trinity Hall	1.10.2001	31.12.2003
Khalifa	Dr	J	MML	5 of 5	Trinity	1.10.1998 1.10.2003	30.9.2003 30.9.2006
Lewis	Dr	Paul	SPS and Economics	1 of 1	Selwyn	1.10.2002	30.9.2007
Mandelbrote	Mr	Scott	History	2 of 6	Peterhouse	1.10.2002	30.9.2007
O'Hanlon	Dr	R	History	1 of 6	Clare	1.10.2000	30.9.2005
Phillips	Dr	Cathy	English	4 of 7	Downing	1.10.1999	30.9.2005
Preston	Dr	Claire	English	2 of 7	Sidney Sussex	1.10.1994 1.10.1998	30.9.1996 30.9.2004
Riley	Dr	J	Physics and Chemistry	1 of 1	Girton	1.10.1996 1.10.2001	30.9.2001 30.9.2004
Rimell	Dr	Victoria	Classics	1 of 2	Girton	1.1.2003	30.9.2004
Seville	Dr	Catherine	Law	2 of 3	Newnham	1.10.1995 1.10.2000 1.10.2003	30.9.2000 30.9.2003 30.9.2005
Smith	Dr	David	History	4 of 6	Selwyn	1.10.2001	30.9.2007
Tee	Mrs	L	Law	3 of 3	Lucy Cavendish	1.10.1998	31.12.2003
Thom	Dr	D	SPS and HPS	2 of 2	Robinson	1.10.1995 1.10.2000 1.10.2003	30.9.2000 30.9.2003 30.9.2005
Thompson	Dr	D J	Classics	1 of 2	Girton	1.10.1992 1.10.1998 1.10.2001	30.9.1998 30.9.2001 30.9.2005
Toye	Dr	Richard	History	6 of 6	Homerton	1.1.2004	31.12.2008
Warde	Dr	Paul	History	5 of 6	Pembroke	1.1.2004	31.12.2008
Zeeman	Dr	N	English	6 of 7	King's	1.10.2000	30.9.2005
Davis	Dr	Jennifer S	Law – Norton Rose		Wolfson	1.10.2000	30.9.2005
McBride	Dr	Nick	Law – Norton Rose		Pembroke	1.10.1999	30.9.2004
Miles	Ms	Jo	Law – Norton Rose		Trinity	1.10.2000 1.10.2003	30.9.2003 30.9.2005
Parker	Mr	Ben	Law - Norton Rose		St John's	1.1.2003	31.12.2005
Spaventa	Dr	Eleanor	Law – Norton Rose		New Hall	1.10.2000 1.10.2003	30.9.2003 30.9.2005

## **TIME-LIMITED TEACHING FELLOWSHIPS SCHEME**

### **Aims and objectives**

The aims and objectives of this scheme are to strengthen the undergraduate supervision system at the less well-endowed Colleges, thereby helping to produce a more even playing field between well-endowed and less well-endowed Colleges; and to help to integrate some of the holders of Newton Additional Appointments and similarly placed postdoctoral researchers into College life.

### **Policy**

The Trustees agreed in 1999 to make up to 25 grants available to enable young postdoctoral researchers to be elected to teaching Fellowships at the less well-endowed Colleges shown below. Each appointment may be held for up to 5 years. The duties of each person appointed include giving 4 hours per week of undergraduate supervision. In return the Trust pays the College £4,000 per annum towards the overheads involved.

### **Appointments made**

Eleven posts were taken up in the first round of appointments in 2000. The Trust has advertised further rounds of appointments annually since, and **7** new appointments and **one** reappointment were made in 2003-04. Current post-holders are shown in Table 5.

### **The following Colleges are eligible to participate in this scheme**

Downing	Pembroke
Fitzwilliam	Queens'
Girton	Robinson
Homerton	Selwyn
Hughes Hall	St Catharine's
Lucy Cavendish	St Edmund's
Magdalene	Wolfson
New Hall	

**TABLE 5: Time-Limited Teaching Fellowship appointments as at 11 March 2004**

<b>Lastname</b>	<b>Firstname</b>	<b>College</b>	<b>Department</b>	<b>From</b>	<b>End of post-doc</b>
Alcantara	Jose	Fitzwilliam College	Experimental Psychology	1 October 2003	30 September 2005
Ball	Stephen	New Hall	Chemistry	1 October 2001	30 April 2005
Beauregard	Daniel	Selwyn College	Biochemistry	1 October 2000	28 February 2005
Blyth	Caroline	St Edmund's College	English	1 October 2000	30 September 2006
Browne	Jude	Downing College	Social and Political Sciences	1 October 2002	30 September 2007
Clarke	Kate	Queens' College	Plant Sciences	1 October 2001	30 September 2004
Damery	Sarah	St Catharine's College	Geography	1 January 2003	30 September 2004
Greatorex	Jane	Lucy Cavendish	Medicine	1 October 2003	30 September 2006
Hayward	Stuart	Girton College	Earth Sciences	1 October 2002	31 May 2005
Kaminski	Ann	St Edmund's College	Biochemistry	1 October 2000	31 October 2005
Lynch	Stephen	St Edmund's	Physics	1 October 2003	30 September 2006
Manning	Russell	St Edmund's	Divinity	1 October 2003	30 August 2008
McCarthy	Nicola	St Edmund's College	Clinical School	1 October 2000	31 March 2004
Molteni	Carla	New Hall	Physics	1 October 2000	30 September 2003
Niven	Jeremy	Selwyn	Zoology	1 October 2003	31 March 2006
Page	Joanna	Robinson College	Modern and Medieval Languages	1 October 2003	30 September 2006
Sargent	Carol	Hughes Hall	Pathology	1 October 2000	31 December 2003
Speed	Catherine	Hughes Hall	Rheumatology	1 October 2001	31 May 2005
Spring	David	Queens' College	Chemistry	1 October 2001	30 September 2004
Treece	Graham	Queens' College	Engineering	1 October 2003	30 September 2006
Wardle	Fiona	St Catharine's College	Developmental Biology	1 October 2002	30 September 2005
Warner	Christopher	Robinson College	DAMTP	1 October 2001	31 March 2004

## GRANTS MADE TO OTHER BODIES

### DOMESTIC RESEARCH BURSARIES

#### Aims and objectives

To award research scholarships to the best 'Home' (i.e. UK and EU) students who fail to gain support from public sources such as the Research Councils and the AHRB.

#### Policy

The Newton Trust agreed in 1997 to contribute £75,000 per annum for five years to a University-wide scheme, thus adding to other sources of funds to increase the number of awards available. The awards are made by the Board of Graduate Studies on the advice of Academic Division's Committee on Awards. The majority of awards are made to students in the Arts and Humanities. During 2003-03 the Trustees agreed to extend the period of support for a further five years at £85,000 per annum; and in 2004 agreed a further increase to **£90,000** per annum.

In addition, the Trust agreed in 2002 to provide underwriting of **£250,000** over a five-year period to enable firm offers of support to be made earlier by the Committee on Awards to strong candidates who might otherwise be tempted to go to other Universities but who were likely in the event to receive funding from public sources.

#### Grants awarded

In 2003 some **19** new awards were made. The Secretary of the Board of Graduate Studies reported that the availability of the Trust's underwriting had been useful in enabling early offers of awards to be made to students who might otherwise have moved elsewhere but who had, in the course of events, subsequently been awarded a studentship by AHRB. It had not proved necessary to call upon the underwriting in either 2002 or 2003.

## **NEWTON EUROPEAN RESEARCH BURSARIES**

### **Aims and objectives**

The aims and objectives of this scheme are to encourage able students from the European Union to do research at Cambridge and to help them take up their places. (EU students are eligible for support from public sources for their fees, but not at present for maintenance.)

### **Policy**

The Trustees agreed in 1999 to make a donation to the Cambridge European Trust totalling £600,000 to provide a pilot scheme of Newton European (Research) Studentships of annual value up to £2,000 tenable for up to three years, to be awarded to PhD students from the EU by the Cambridge European Trust on the basis of departmental recommendations. During 2002-03 the Trustees agreed to make further and final donations of up to £400,000 for the same purpose.

### **Grants awarded**

The Cambridge European Trust made 79 awards under this scheme during 2003-04 at a total cost to the Newton Trust of **£158,000**.



## SPECIAL DONATIONS FROM TRINITY COLLEGE

### Background and Financial summary

Since 1996 the Trust has received several Special Donations from Trinity College for earmarked purposes. The earmarked donations to the Bursary Scheme (1998 and 1999) are included in the Bursary Scheme report (pages 14-18). Spending from the other Special Donations is discussed below.

A financial summary of these Special Donations is given in Appendix 2 (Green table, Donations A, B and C).

All the donations (A, B and C) have been fully committed for some time, indeed a modest overshoot in expenditure has been expected, this overshoot to be met from the General Fund. By the end of January 2004 almost all of the payments due from these funds had been made, and the remaining assets and liabilities of these funds were transferred to the General Fund at that date. In consequence, this will be the Trust's *final* report to the College on the Special Donations.

#### A. Special Donation of £1.615m (1996) towards major University building projects (Donation A)

The Trustees have made grants under this initiative, including accrued interest (about £380,000 up to 31 January 2004) , as follows:

• A new building for the Faculty of Divinity	£300,000
• Remodelling and Refurbishment, Raised Faculty Building	£515,000
• Mathematics Faculty relocation to Clarkson Road	£500,000
• Department of Engineering for additional accommodation in Trumpington Street ( <i>and see Donation B2 below</i> )	£300,000
• New accommodation for the Institute of Criminology	£300,000
TOTAL	£1,915,000

All these grants have been paid, and the balance of accrued interest (£78,845) has been transferred to the General Fund.

#### B. Special Donation of £1.5m (1997) towards major University projects, buildings or other purposes (Donation B)

The Trustees agreed in 1998 to the use of this Special Donation as follows:

- That £1 million should be deployed in conjunction with the University's Strategic Planning Reserve Fund on the recommendation of the Vice-Chancellor and subject to the condition that payments by the Trust in any year are at least matched by an equal contribution to the Fund in that year from the University or from other donors (**Donation B1**). The money could thereby be used not only for buildings but for recruitment of senior personnel, laboratory refurbishment etc.

- That the remaining £0.5 million, together with interest earned on the total allocation (about £430,000 up to 31 January 2004), should be deployed for urgent capital purposes in the University, to be notified by the Vice-Chancellor to the Trustees (**Donation B2**).

The following grants have been approved:

**Donation B1:**

• Relocation of the Department of Biochemistry, Part I Teaching Laboratory	£200,000
• Department of Genetics, additional Research Accommodation	£150,000
• Department of Plant Sciences: phased programme of refurbishment of the Department's teaching and research accommodation	£150,000
• Department of Geography: Research Associate Support	£48,000
• Computer Laboratory: Lectureship in Systems Modelling	£125,000
• Music School: expansion, remodelling and renovation	£150,000
• University Library: Greensleeves Project	£200,100
TOTAL	£1,023,100

All these grants have been paid except the final instalments to Geography and the University Library, and the final two instalments to the Computer Laboratory. All of these liabilities have been transferred to the General Fund.

**Donation B2:**

• Centre for Atmospheric Chemistry, refurbishment	£150,000
• Department of Engineering, for additional accommodation in Trumpington Street	£200,000
• Computer Laboratory as 'enabling money' towards the cost of building a new Computer Laboratory at West Cambridge	£200,000
• Department of Applied Mathematics and Theoretical Physics, refurbishment of laboratory, to meet part of the condition of a successful JIF bid	£250,000
• Veterinary Medicine: New surgical facility	£200,000
TOTAL	£1,000,000

All these grants have been paid except the final instalment to the Department of Applied Mathematics and Theoretical Physics. This liability has been transferred to the General Fund.

**C. Special Donation of £1.5m (1997) to provide Hardship Funds for Students at less well endowed Colleges (Donation C)**

The Trustees agreed in July 1999 to distribute this Special Donation of £1.5 million, together with expected accrued interest, as capital endowment payments in five annual instalments of some **£400,000** to the thirteen least well-endowed Colleges, sharing the money out on the basis of a formula that takes account of College wealth and undergraduate student numbers. It is a condition that Colleges provide money either to match the donations by way of endowment, or to match the annual income from the endowment with donations by way of income obtained from benefactors on a year-by-year basis.

Donations were agreed as follows:

<i>College</i>	<i>Annual Capital Donation (x5)</i>
	£
Downing	30,000
Fitzwilliam	50,000
Hughes Hall	25,000
Lucy Cavendish	20,000
Magdalene	30,000
New Hall	25,000
Pembroke	25,000
Queens'	35,000
Robinson	50,000
St Catharine's	30,000
St Edmund's	20,000
Selwyn	20,000
Wolfson	35,000

In January 2004 the fifth and final instalment of the donation to each College was paid. A funding shortfall of about £140,000 owing to adverse market circumstances has been made good by the General Fund.

In the majority of cases, the endowment funding from the Trust to the College has been matched by corresponding donations from others (usually alumni) from outside Cambridge.

It is anticipated that over the five-year period of this donation the total capital sum raised by recipient Colleges from the Trust and from other benefactors for student hardship will exceed £3.5m.

## **APPENDIX 1**

**Isaac Newton Trust**

**Accounts**

**for the year ended 31 January 2004**

## APPENDIX 2

### Consolidated list of grants

The following Tables list all the grants that the Trustees have approved. As shown in the Tables, not every grant approved has been taken up, either because circumstances have changed, or else because the Trust's matching requirement has not been met.

The following abbreviations are used:

AA=Additional Appointment  
 EG=Equipment Grant  
 C=Confirmed [shaded=part confirmed]  
 U=Underwriting  
 CU=Underwriting taken up  
 L=Lapsed  
 W/D=Withdrawn  
 X=Not Confirmed  
 MI=Major Initiative

Sums in square brackets are not included in totals (because the grant has either been withdrawn, or included elsewhere).

The correspondence of Minute numbers to meeting dates is as follows:

Year	Minutes	Year	Minutes
1988	1 – 26	1997	536 – 578
1989	27 – 94	1998	579 – 621
1990	95 – 185	1999	622 – 695
1991	186 – 264	2000	696 – 766
1992	265 – 322	2001	1.00 – 1.59
1993	323 – 388	2002	2.00 – 2.49
1994	389 – 447	2003	3.00 – 3.53
1995	448 – 496	2004	4.00 –
1996	497 – 535		

The column headed 'Matching Required' indicates the total matching sum (normally from sources outside Cambridge, but occasionally from within) required to release the Newton Trust grant. For Confirmed grants (labelled 'C') this matching requirement has been met.

An index to the Tables is given at the end.